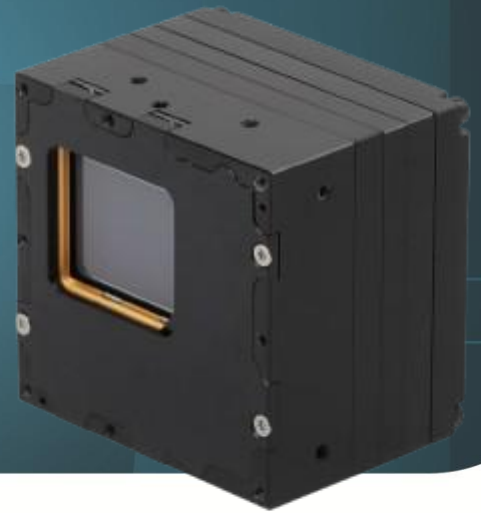


HIGH-RESOLUTION
UNCOOLED THERMAL CORE

EXOSSENS
REVEAL THE INVISIBLE

Crius S 1280 Series



*ULTRA-COMPACT THERMAL CORE FOR
BETTER DRI RANGES*

KEY FEATURES



**HIGH RESOLUTION -12 μ m FOR
BETTER DRI RANGES**



**SMALL, LIGHT & LOW POWER
CONSUMPTION**



FRAME RATE UP TO 60 FPS



**UNCOOLED WITH
MECHANICAL SHUTTER**

The Crius S 1280 series stands out with its compact design and exceptional resolution, offering enhanced DRI (Detection, Recognition, Identification) capabilities for long-range observation platforms.

Ideal for Search and Rescue missions and the surveillance of critical areas such as borders and infrastructure, it provides unparalleled performance for electro-optical systems.

Its adaptable and universal design ensures effortless integration into existing defense and security E/O systems, making it a versatile choice for upgrading operational efficiency.

Crius S 1280 Series



KEY PERFORMANCES

Sensor	Micro-bolometer technology
Resolution / Pixel Pitch	1280 x 1024 pixels / 12 μ m
Spectral Range	8 – 14 μ m
Max NETD (F/1 ; 300K ; 30 Hz)	< 50 mK
Operating temperature range	-40°C to +70°C
Power consumption	< 2.8 W (DF40); < 4.5 W (SDI); < 3.0 W (MIPI CSI-2)
Qualification	Industrial (Standard grade)

FUNCTIONS & INTERFACES

Image processing	BPC (Bad Pixel Correction), NUC (Non-Uniformity Correction), AGC (Automatic Gain Control)
Image optimisation	AGC (Automatic Gain Control)
Output options	DF40, SDI, MIPI CSI-2
Dimensions (L x B x H)	46 x 47 x 27 mm ³ (DF40); 46 x 47 x 43 mm ³ (SDI); 46 x 47 x 31 mm ³ (MIPI CSI-2)
Shutter options	DF40, SDI, MIPI CSI-2
Weight	< 130 gr (DF40); < 126 gr (SDI); < 105 gr (MIPI CSI-2)

PRODUCT SELECTOR GUIDE

XEN-000968 (Crius S 1280 50 mK (60 Hz))	XEN-000969 (Crius S 1280 50 mK (9 Hz))
---	--

advancedimaging@exosens.com



exosens.com

EXOSENS
REVEAL THE INVISIBLE