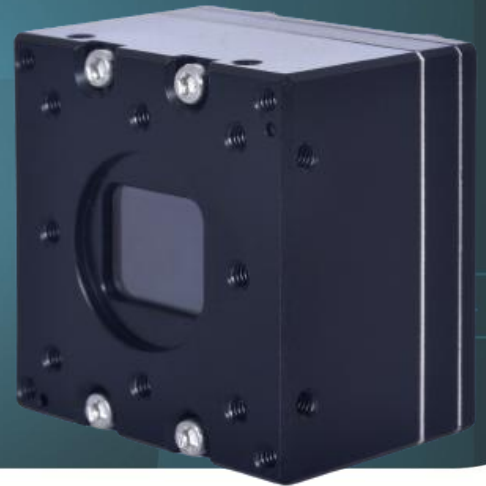


HIGH-RESOLUTION  
UNCOOLED THERMAL CORE

**EXOSSENS**  
REVEAL THE INVISIBLE

# Crius 640 Series



ULTRA-COMPACT VGA  
THERMAL IMAGING CORE

## KEY FEATURES



**VERY HIGH RESOLUTION - 12 $\mu$ m  
FOR BETTER DRI RANGES**



**SMALL, LIGHT & LOW POWER  
CONSUMPTION**

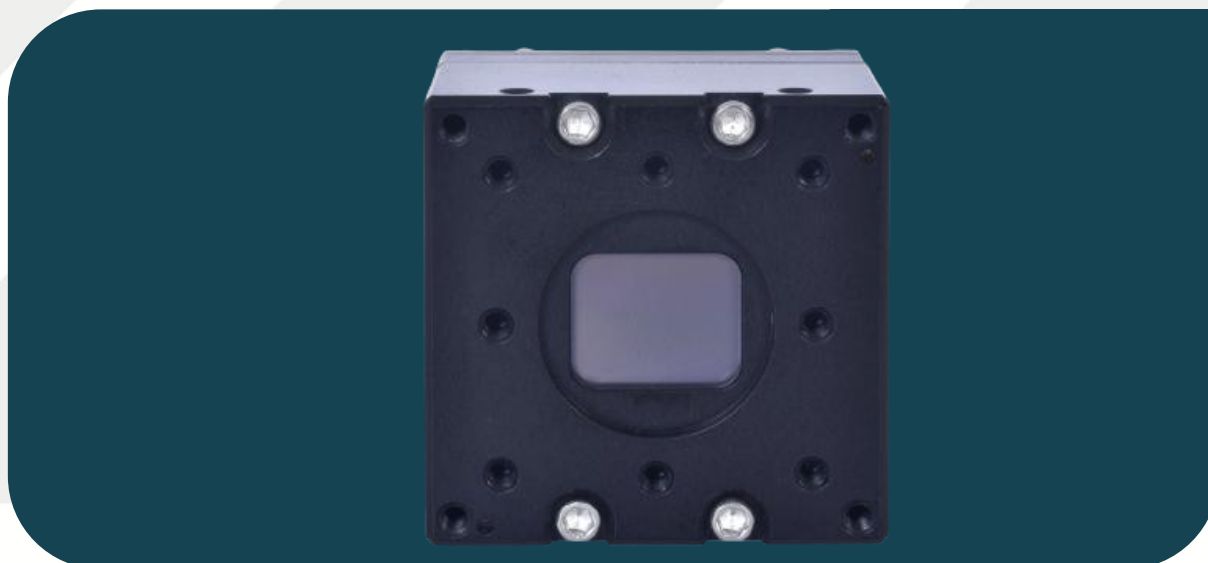


**FRAME RATE UP TO 60 FPS**

Crius 640 delivers outstanding resolution in a compact form, enhancing electro-optical system performance, notably in DRI (Detection, Recognition, Identification), a key factor for long-range observation in search and rescue and sensitive site surveillance.

Its generic design ensures easy integration and retrofit into existing defense and security E/O systems.

# Crius 640 Series



## KEY PERFORMANCES

Sensor	Micro-bolometer technology
Resolution / Pixel Pitch	640 x 480 pixels / 12 $\mu$ m
Spectral Range	8 – 14 $\mu$ m
Max NETD (F/1 ; 300K ; 30 Hz)	< 50 mK or < 40 mK
Operating temperature range	-40°C to +70°C
Power consumption (DF40)	< 1.2 W
Qualification	Industrial (Standard grade)

## FUNCTIONS & INTERFACES

Image processing	BPC (Bad Pixel Correction), NUC (Non-Uniformity Correction), Shutterless NUC
Image optimisation	AGC (Automatic Gain Control)
Output options	CL, SDI, DF40
Additional option	On DF40: Handheld/manual control interface + micro display interface
Dimensions (L x B x H) (DF40)	30 x 30 x 23 mm <sup>3</sup>
Weight (DF40)	< 38 g

## PRODUCT SELECTOR GUIDE

XEN-000920 [Crius 640 50 mK (60 Hz)]	XEN-000921 [Crius 640 50 mK (9 Hz)]
XEN-000922 [Crius 640 40 mK (60 Hz)]	XEN-000923 [Crius 640 40 mK (9 Hz)]

[advancedimaging@exosens.com](mailto:advancedimaging@exosens.com)



[exosens.com](http://exosens.com)

**EXOSENS**  
REVEAL THE INVISIBLE