

# SmartIR 1024



*ULTRA-SENSITIVE THERMAL CORE*

## KEY FEATURES



**PLUG AND PLAY THERMAL  
CAMERA CORE**



**LOW POWER CONSUMPTION**

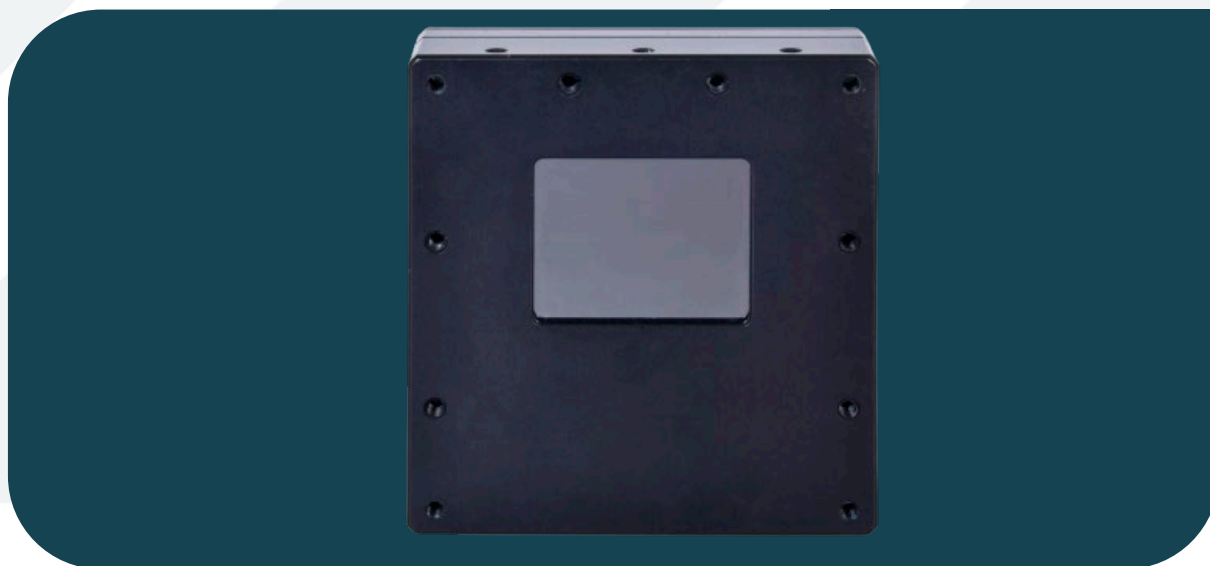


**COMPACT FOR A LARGE  
CHOICE OF APPLICATIONS**

A SWaP optimized camera core with numerous generic variants suitable for integration.

The ideal candidate for highly demanding long-wave infrared (LWIR) applications such as: high DRI performance systems (defense, SAR, UAVs, PTZ), high-speed inspection systems (machine vision) or active thermography (Non-Destructive Testing).

# SmartIR 1024



## KEY PERFORMANCES

Sensor	Micro-bolometer technology
Resolution / Pixel Pitch	1024 x 768 pixels / 17 $\mu$ m
Spectral Range	8 – 14 $\mu$ m
Max NETD (F/1 ; 300K ; 30 Hz)	50 mK
Operating temperature range	-40°C to +70°C
Power consumption (DF40)	< 2.5 W
Qualification	Industrial (Standard grade)

## FUNCTIONS & INTERFACES

Image processing	BPC (Bad Pixel Correction), NUC (Non-Uniformity Correction), Shutterless NUC
Image optimisation	AGC (Automatic Gain Control)
Output options	CL, SDI, DF40
Dimensions (L x W x H) (DF40)	52 x 48 x 25 mm <sup>3</sup>
Weight (DF40)	< 90 g

## PRODUCT SELECTOR GUIDE

XEN-000941	SmartIR1M0 50 mK (60Hz)
------------	-------------------------

[advancedimaging@exosens.com](mailto:advancedimaging@exosens.com)



[exosens.com](http://exosens.com)

**EXOSENS**  
REVEAL THE INVISIBLE